



→ Copenhagen Airport

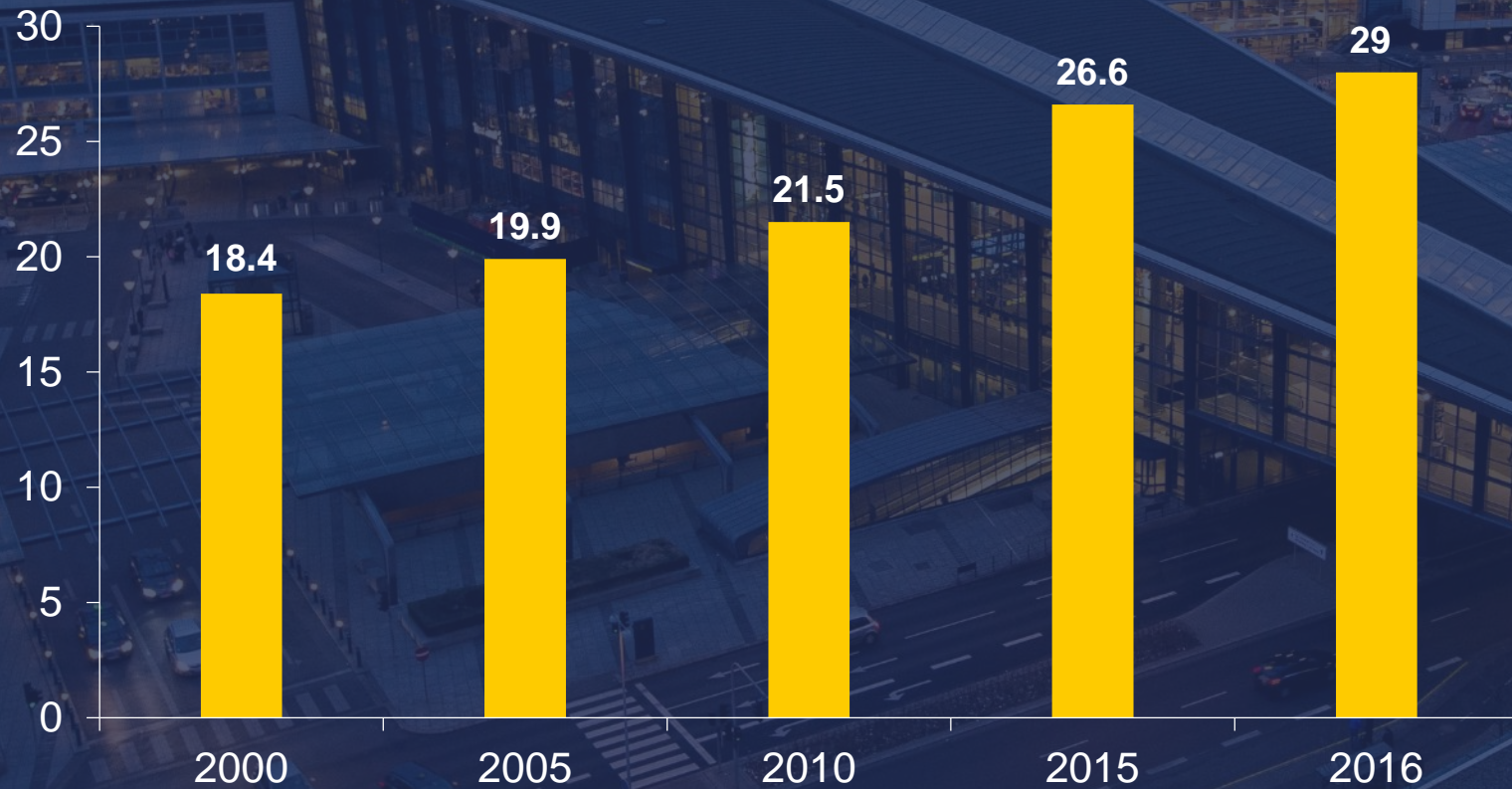
Kristian Durhuus, COO

1 June 2017



Passenger Growth in CPH

Million
passengers



■ Passengers in CPH

- Strong passenger growth on **long-haul** routes = 83 % increase from 2000-2016

→ Copenhagen Airport 2016



79,353
PASSENGERS PER DAY



88
OVERALL PASSENGER
SATISFACTION
(ON A SCALE OF 0-100)

726 DEPARTURES
AND ARRIVALS
PER DAY



INTERNATIONAL 94%



BUSINESS 42%



DOMESTIC 6%



LEISURE 58%

AGE COMPOSITION

15-29 YEARS 31%

30-49 YEARS 44%

50-59 YEARS 16%

60+ YEARS 9%

TOP 5 DESTINATIONS

LONDON 6,833*

STOCKHOLM 4,331*

OSLO 4,151*

AMSTERDAM 2,663*

PARIS 2,537*

* Average number of
passengers per day.

ARRIVED BY



21%
CAR



17%
TAXI



31%
METRO



28%
TRAIN



3%
BUS

CHECKED IN VIA

19% **29%** **22%** **30%**



COUNTER



SELF-SERVICE



MOBILE



INTERNET



EMPLOYEES

2,498
CPH EMPLOYEES

23,000
EMPLOYEES AT THE AIRPORT

700+
BUSINESSES AT THE AIRPORT

More Facts & Figures

- 165 direct routes / 36 Long-haul
- Europe's 14-largest airport
- Scandinavia's largest airport with largest catchment of 4 million.
- One airport - two countries. Serving both Denmark and South Sweden



© CPH responsibility

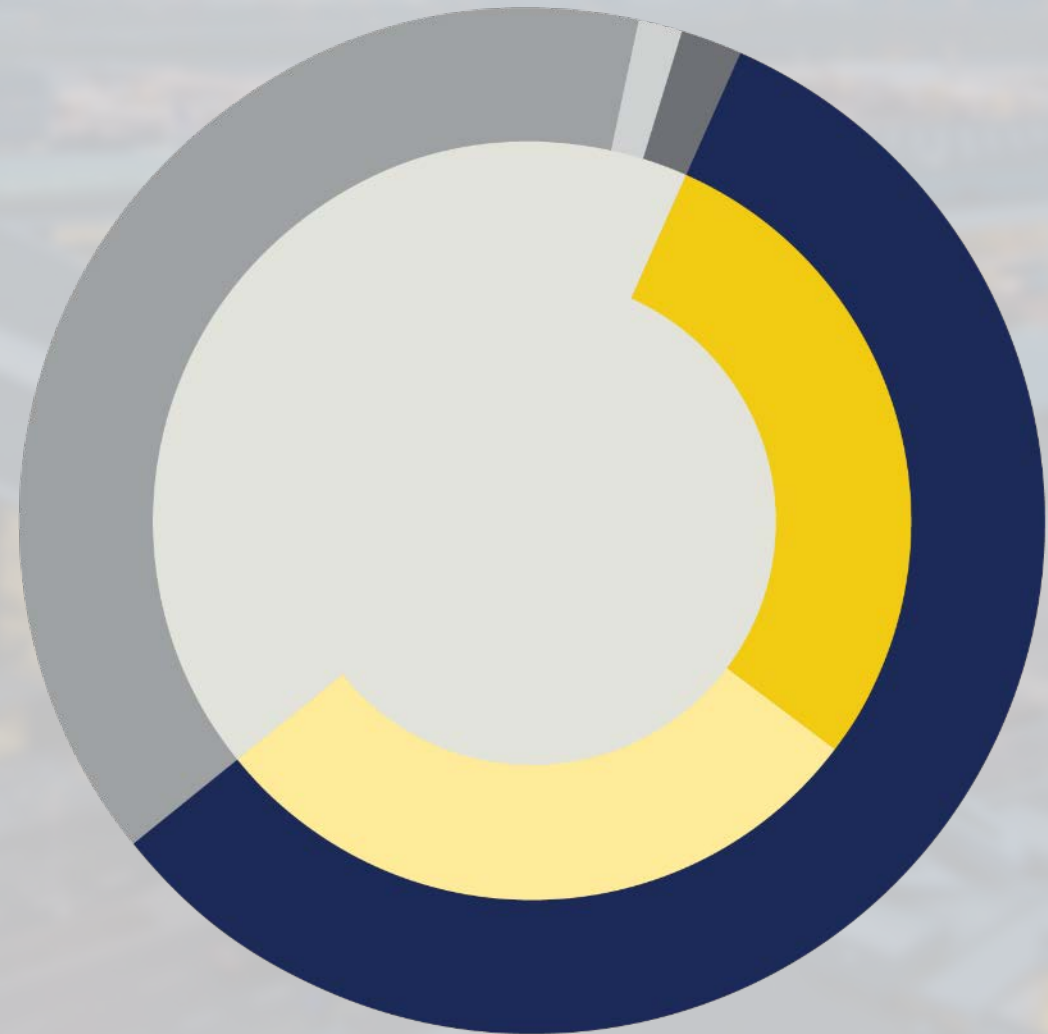
© Airport partner responsibility



AT 31 DECEMBER 2016

SHAREHOLDER STRUCTURE

- **57.7%** Copenhagen Airports Denmark ApS (CAD)*
- – Ontario Teachers' Pension Plan (OTPP)
- – Macquarie European Infrastructure Fund III (MEIF3)
- **39.2%** The Danish State
- **1.8%** Danish private and institutional investors
- **1.3%** International private and institutional investors



* See note 16 to the financial statements on related parties for a further description of OTPP's and MEIF3's ownership of shares in CPH.



WORLD CLASS HUB STRATEGY



→ World Class Hub 1.0

8

9

Breakthroughs



3

Strategic Themes





What have we achieved?

35%

since 2010



We have increased traffic

Increased Capacity:

7 mil.

Passengers



We have expanded the airport

Passenger satisfaction

88

Employee Engagemnt

81%



We have more satisfied customers and employees!

"Most Efficient Airport in Europe"
Air Transport Research Society, 2016



More Awards!







Expanding CPH as a World Class Hub



→ Why is an expansion of Copenhagen Airport necessary?



An aviation industry undergoing changes

→ Three major trends

LIBERALISATION OF THE AVIATION MARKET

- Increased competition between airlines in Europe, introducing point-to-point airlines (P2P)
- Shifting airline landscape

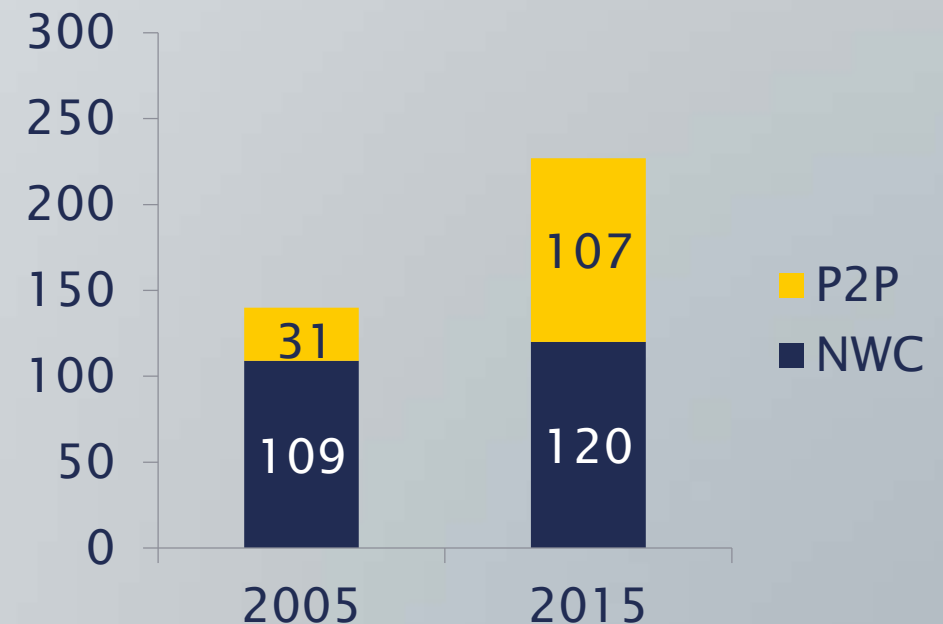
CHANGING PASSENGER DEMANDS

- Increased demand for direct routes
- Efficient airport with digitalized solutions

NEW TECHNOLOGY

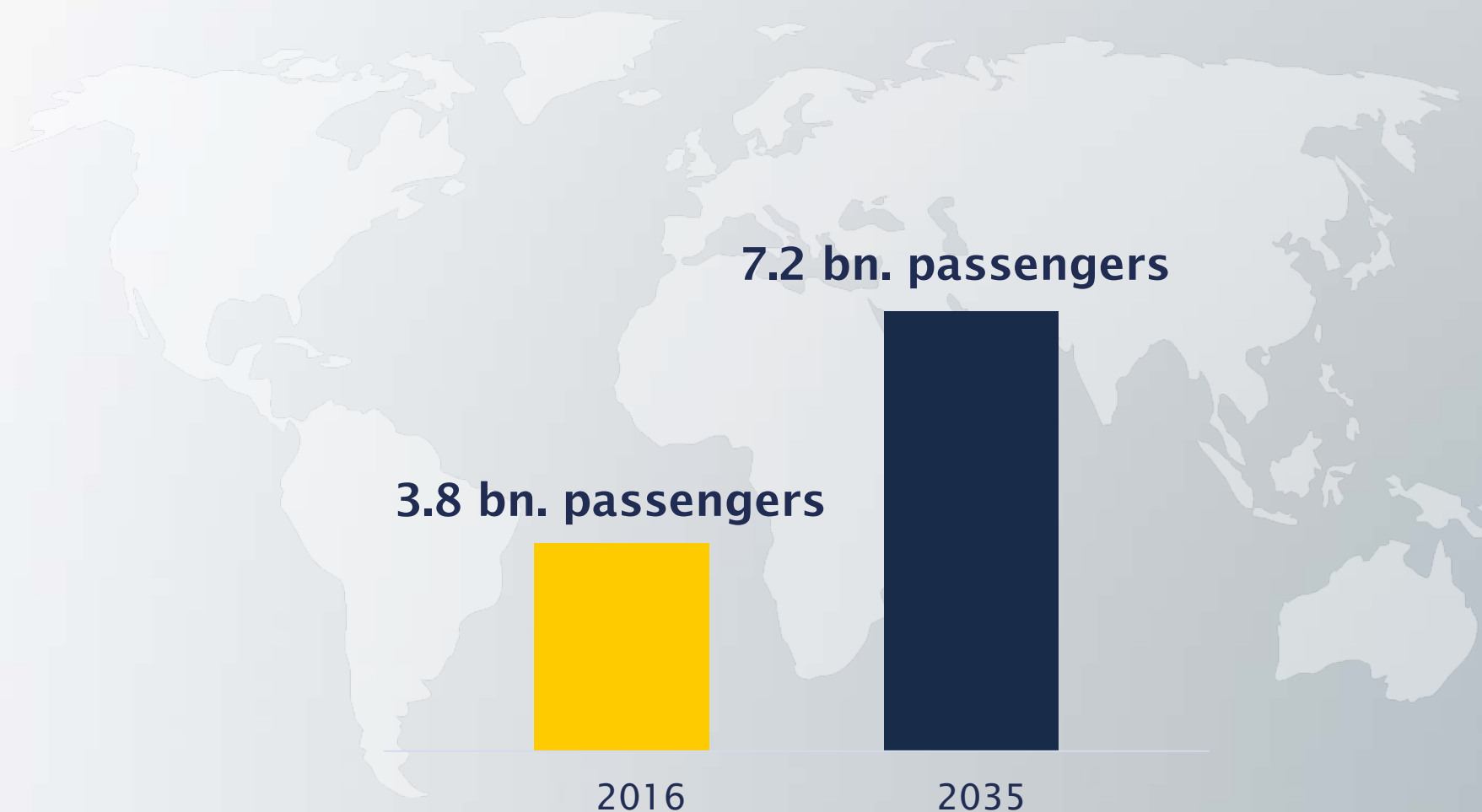
- New fuel efficient and light planes expand the range of aircrafts, creating new routes (see 787 Dreamliner as an example).

FIGURE: The development in the total amount of routes distributed on point-to-point companies (P2P) and network companies (NWC) in Copenhagen Airport





→ Global air traffic expected to almost double during the next 20 years

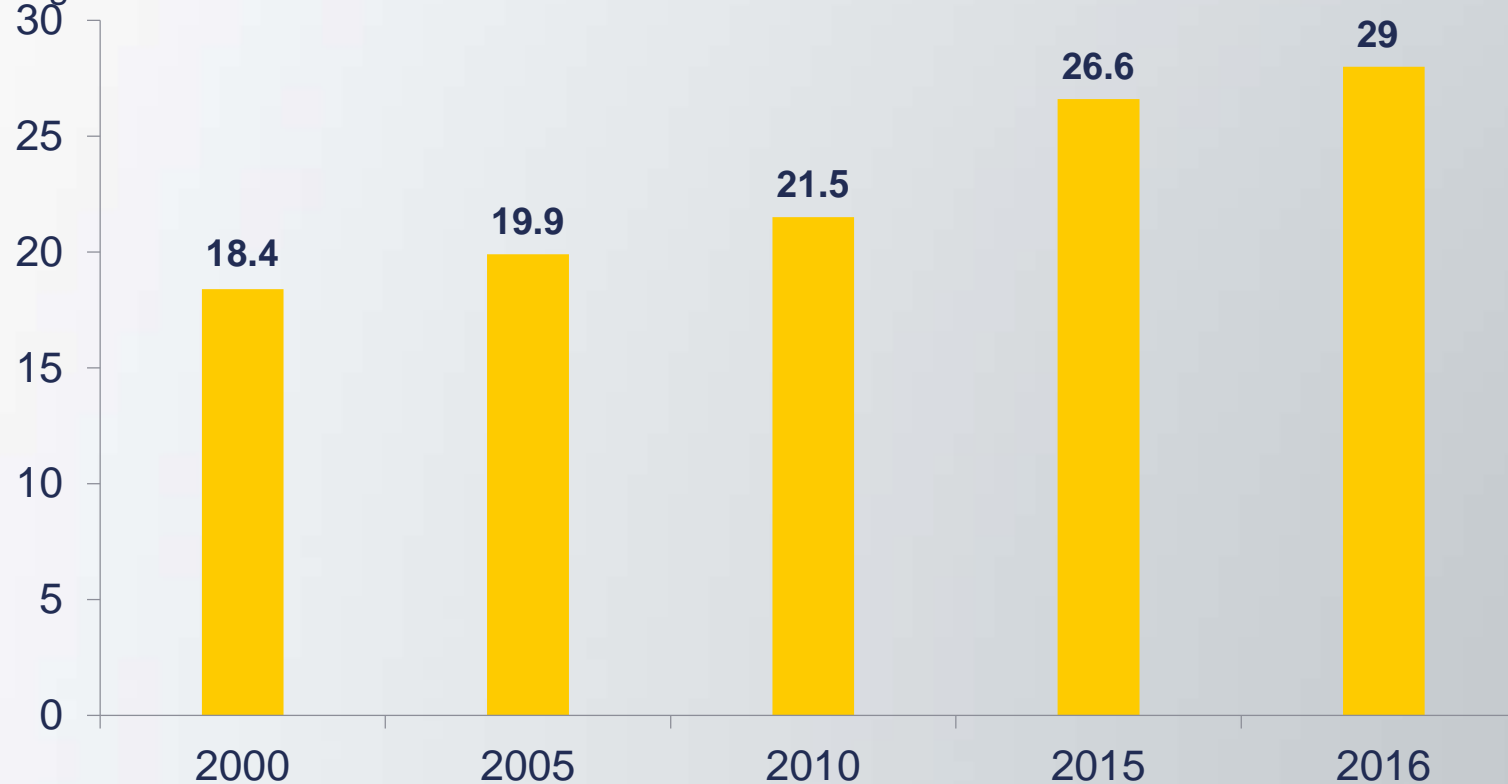


Source: IATA



Significant growth in Copenhagen Airport

Million
passengers

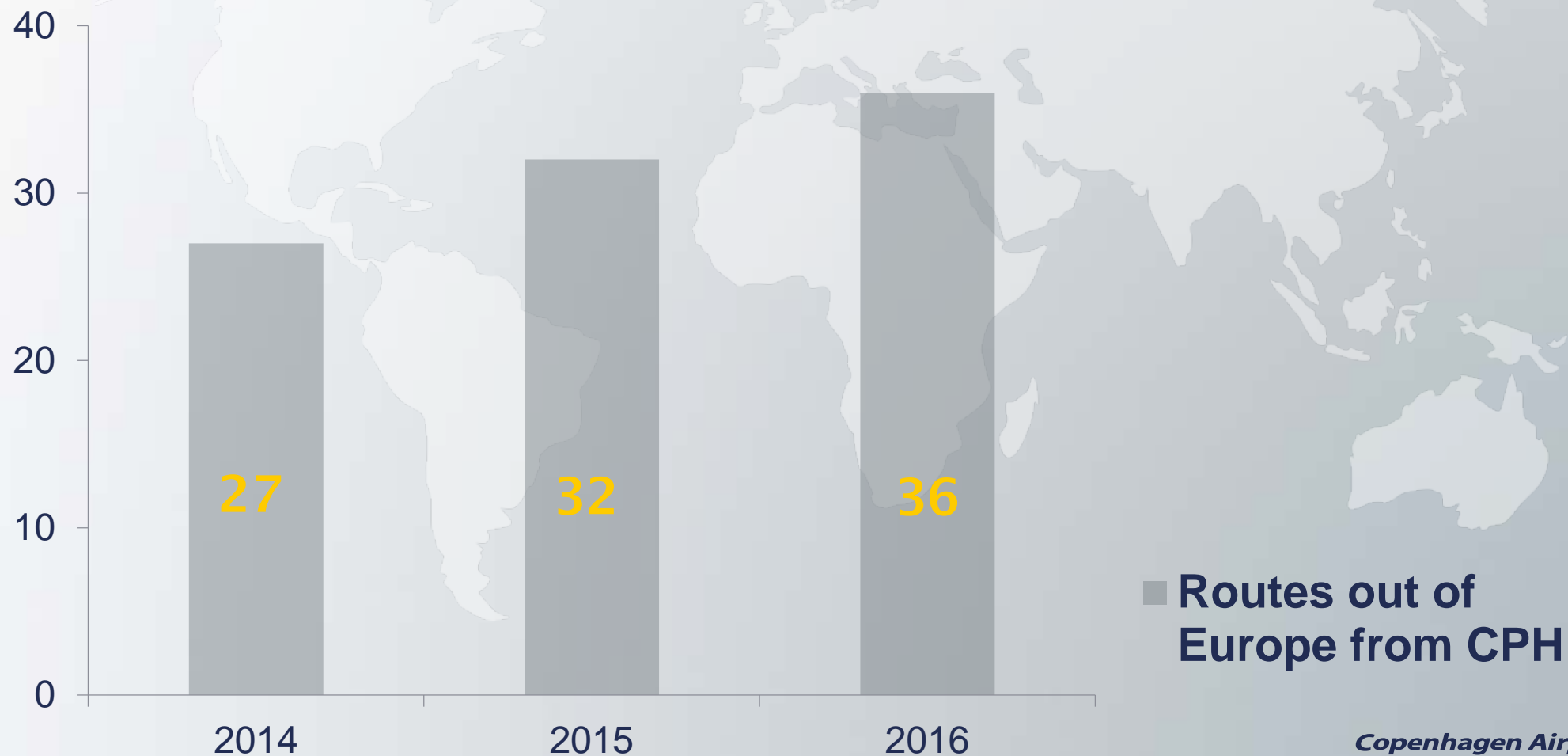


■ Passengers in CPH

- Strong passenger growth on **long-haul** routes = 83 % increase from 2000-2016



Creating a strong international hub in Northern Europe





A stronger international accessibility

Through 17 new long-haul routes

Current routes

| | |
|-------------------|-----------|
| San Francisco | Tokyo |
| Los Angeles | Baghdad |
| Las Vegas | Erbil |
| Chicago | Doha |
| Orlando | Dubai |
| Fort Lauderdale | Lahore |
| Washington DC | Phuket |
| Toronto | Bangkok |
| New York, Newark | Singapore |
| New York, JFK | Beijing |
| San Juan | Shanghai |
| Søndre Strømfjord | Miami |
| Narsarsuaq | Boston |
| Agadir | Teheran |
| Marrakech | |
| Casablanca | |
| Cairo | |
| Tel Aviv | |
| Sharm El Sheik | |
| Beirut | |



Future routes

| |
|------------------|
| Vancouver |
| Seattle |
| Mexico City |
| Sao Paulo |
| Rio de Janeiro |
| Cape Town |
| Johannesburg |
| Nairobi |
| Addis Ababa |
| Amman |
| Mumbai |
| New Delhi |
| Colombo |
| Kuala Lumpur |
| Ho Chi Minh City |
| Hong Kong |
| Seoul |





→ Expanding CPH:

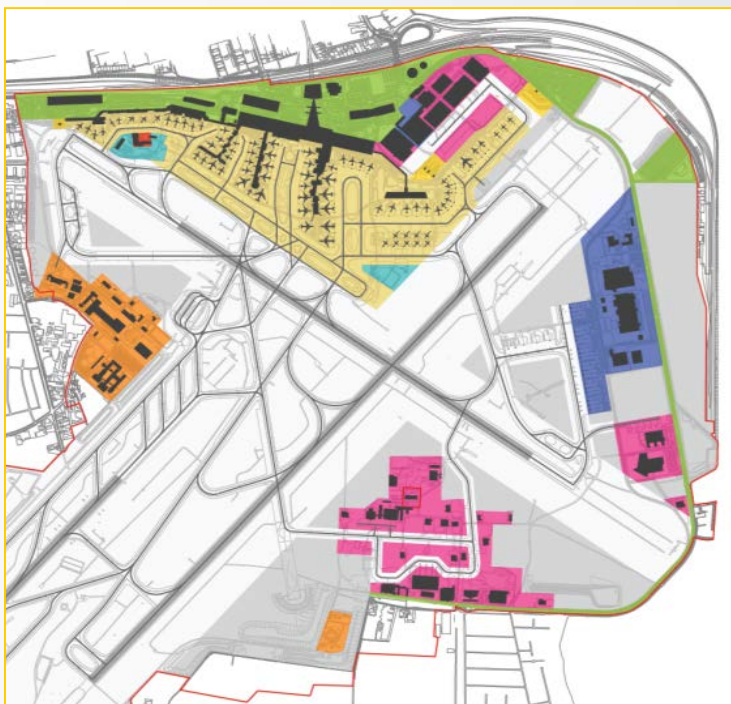
Our plan to grow from 25-40 million passengers annually is on track

Copenhagen Airports

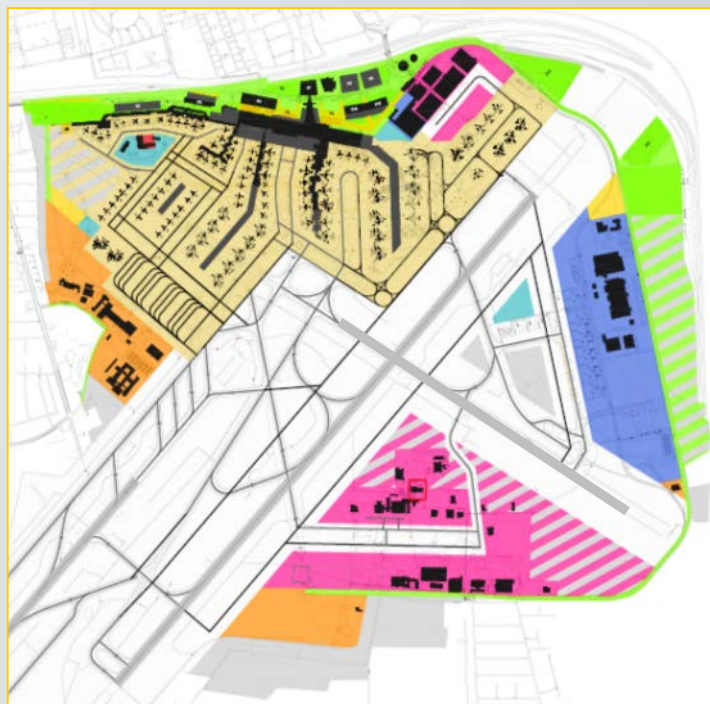
CPH



CPH Masterplan



Airport layout @ 25 MPPA



40 MPPA Masterplan



60 MPPA Scenario



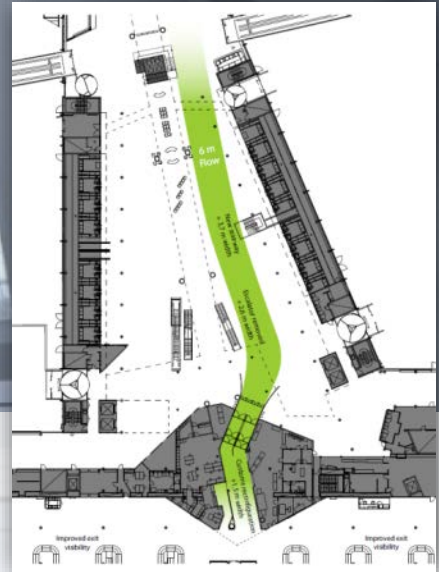
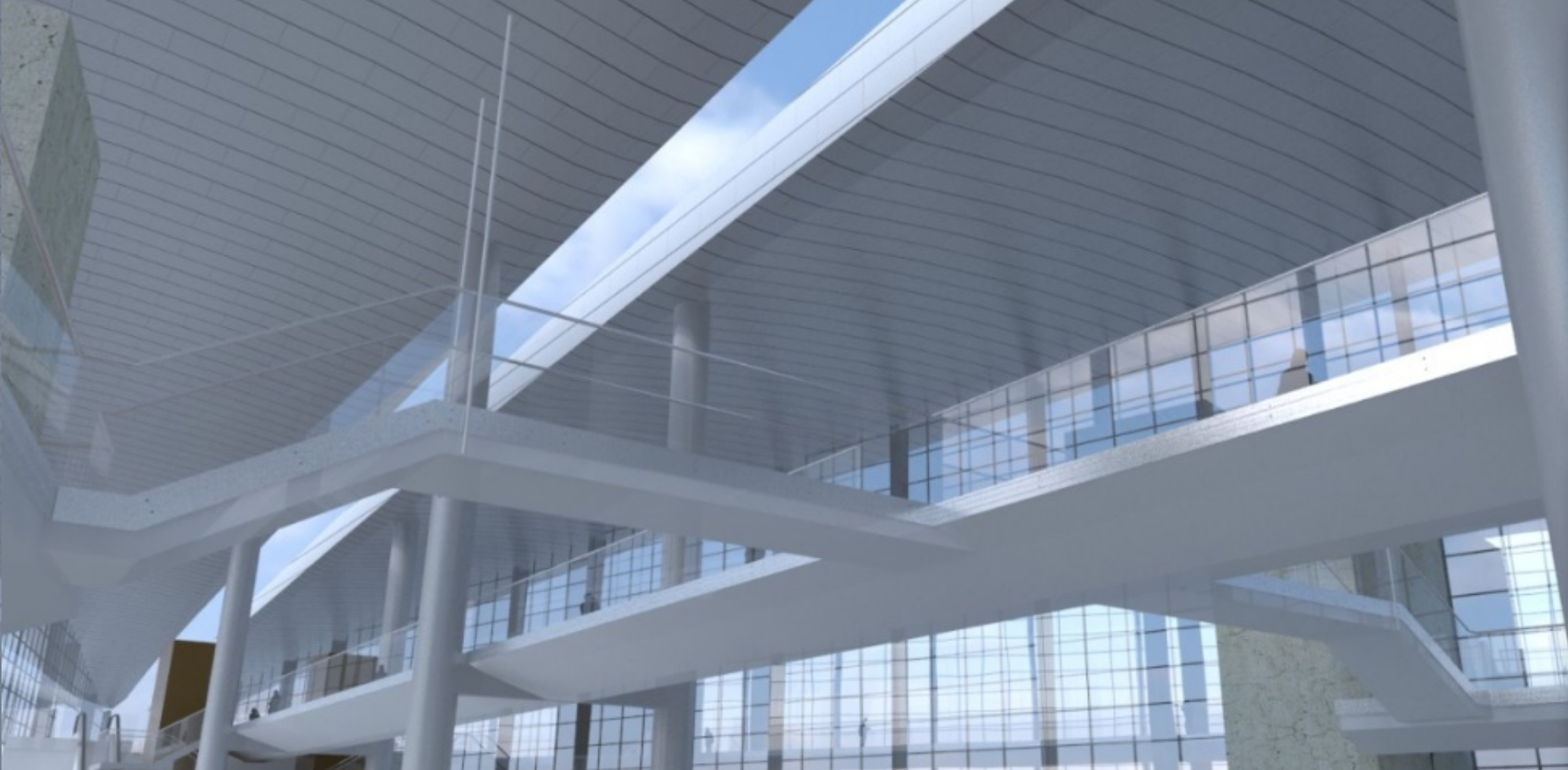
→ Current expansions



→ Security area & Forecourt

Copenhagen Airports





→ Terminal 3 landside



➔ Terminal 2 Airside



Pier E



→ Aircraft Stands



→ Car parking



→ Planning for futher expansion

→ One-roof terminal concept



→ Arrivals in Terminal 3



→ Departure in Terminal 2



→ Room for the Extraordinary



→ High Speed Train





→ Copenhagen Airport
Thank You

Copenhagen Airports

